



INDUSTRIAL MOUSE

The IM2 TUFSTIK® is a rugged pointing device for industrial conditions, utilising APC Technology's own patented opto-strain-gauge sensing technology in an ergonomic pointing device with "click in the stick".

The mouse cursor speed is proportional to displacement of the joystick, providing both speed and precision. Its movement is optimised with an "orthogonal weighting" making horizontal and vertical movements easier to describe.

Unlike mice and trackballs, it is unaffected by dust and water and is sealed to IP65.

The unit connects via a standard PC serial or PS/2 port and is available for desktop or panel mounting.

The desktop version has a metal base with a rubber overlay and requires little desk space; its weight and rubber feet ensure it does not slip.

The IM2 is particularly suited to industrial applications. It is ideal for those really rugged conditions where plastic will not do the job, such as foundries, food manufacturing, smelters, steel works and public access. It is competitively priced and requires little maintenance.

The IM2 is an Australian product designed and manufactured in Australia by APC Technology, an Australian-owned company with a great track record.

FEATURES

- "CLICK IN STICK"
- SEALED TO IP65
- PRECISE FAST CONTROL
- STYLISH AND RUGGED
- LOW MAINTENANCE
- SERIAL OR PS/2-AUTO SELECT
- TESTED FOR EMC TO **CE** STANDARDS
- AUSTRALIAN DESIGNED AND MANUFACTURED



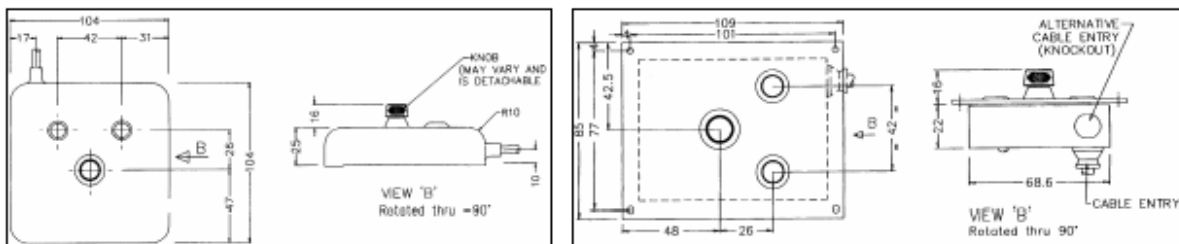
"IM2- a Industrial Pointing Device for Rugged Conditions"

GENERAL SPECIFICATIONS

- SEALING:** IP65.
- CONSTRUCTION:** Die cast aluminium construction with nitrile rubber overlay.
- TEMPERATURE:** Operating: 0 to 50°C Non-operating: -30°C to +70°C
- EMC Immunity:** CE: EN5008-2:1995 Generic Immunity Standard Part 2: Industrial Environment
- EMC Emissions:** CE: EN55022:1995. CISPR22 1993 Class B FCC: Class A
- SHOCK:** 25g 11mS sine wave, 3 axis
- WEIGHT:** Approx 350g
- OPERATION:** Cursor movement speed is proportional to joystick displacement. Auto zero on power up.
- JOYSTICK:** Opto-Strain-Gauge.
Compatible with Microsoft® Mouse. (Driver not provided)
- CONNECTION:** 2 metre coiled lead with nine pin female D type connector for serial mouse. Adaptor provided for PS/2 connection.
- NOTE:** Joystick is covered by U.S. patent 5,973,673.
- CONFIGURATION:** The IM2 is the standard desk mount version. The IM2-P is the Panel Mount version. The Panel Mount version is available with Stainless Steel face plate - the IM2-P-SS. The IM2-OEM is a low cost version without faceplate, enclosure or cable, for integration into the customer's own panels. Three button pointer operation is available as an option. The two buttons and 'click in stick' can be assigned in any combination to left, centre and right button. Please advise required assignment with order. Minimum quantities apply.

DIMENSIONS

The diagrams show the IM2 Desk Mount (left) and Panel Mount (right).
Cut-out size for the Panel Mount version is 95 x 70 mm.



**Due to continuing developments, specifications are subject to change without notice.
No Liability is accepted for errors and omissions.**